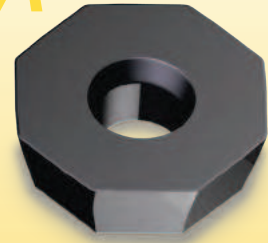
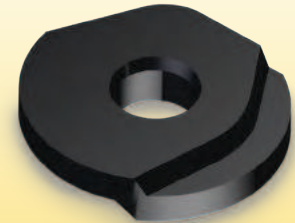


**-RA**

This geometry is a precision insert for milling Cast Iron. The extended wiper-facet on this insert geometry allows a 50% higher feed rate for higher productivity. This geometry is available with SC3025, our leading Cast Iron milling grade.

-RA**-RG..S**

This geometry is designed for finish machining of 3D profiles. It is extremely accurate and delivers a very long tool life. The RG..S is excellent when machining a side wall that is close to 90°. Suitable for machining of all materials.

-RG..S**-T**

This geometry is for general purpose applications when a strong cutting and excellent chip breaking capability is required. This geometry is found on a wide range of Stellram inserts. The design is nearly as tough as flat-top inserts. Mainly to be used when machining Steel, Steel Alloys, Cast Irons and Hardened Steels.

-T